

DRIVER AND EVENT DETAILS

Name Janne
 Date 9.12.2012
 Event FTT 1 Vantaa
 Weather
 Result 7.

CHASSIS AND ELECTRICS

Chassis standard
 Top Deck U4064
 Bodyshell Speed 6 lw
 Wing std
 E.S.C Viper VTX10BE
 Servo sanwa 801
 Receiver sanwa
 Cells Thunder Power
 Cell Position Backward ☐ Forward ☒

TRACK CONDITIONS

Grip Level High ☒ Medium ☐ Low ☐
 Type Tight ☒ Open ☐ Both ☐
 Surface Carpet ☒ Tarmac ☐ Wood ☐
 Condition Smooth ☐ Bumpy ☒
 Temperature °C °F
 Venue Indoor ☒ Outdoor ☐

MOTOR AND GEARING

Motor CS 10.5T
 Rotor Diameter std
 Timing -
 Gear Pitch 48Dp ☒ 64Dp ☐
 Spur Size 85
 Pinion Size 31

Transmission

Option 1 ☐ Option 2 ☒

Mi4x1

WHEELS, TYRES AND INSERTS

Wheels Sweep exp-waw
 Tyres Sweep qts28 hand out
 Inserts Sweep exp-ls
 Tyre Additive CS Competition Grip
 Additive Time 15 MIN (R) 5 MIN (F)
 Tyre Warmers Yes ☐ No ☒

DRIVER NOTES

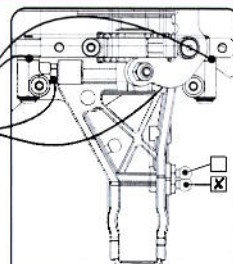
tuplanivelet+kapea hex edessä
 Alloy Worlds setti
 TP-ohjaus

Front Shocks

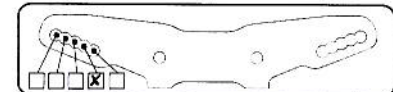
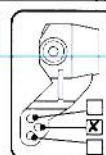
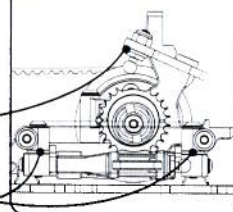
Oil 35 WT
 Springs tam blue
 Piston Holes 2 ☐ 3 ☒
 length Ø1,1
 Rebound 5 %

FRONT SETTINGS

Drive Diff ☐ Spool ☒ One-Way ☐ Height High ☐ Low ☒
 Servo Saver Yes ☐ No ☒ Yoke Flex X ☐ M ☒ STD ☐
 Pivot Blocks Moulded (std) ☒ Alloy ☐
 Screw Block Spacers Front 2,5 mm Rear 2,5 mm
 Wishbone Quik-Klips Front 2,5 mm Rear 1,5 mm
 Toe In-Out In-board ☐ Out-board ☐ 0°
 Ride Height (Chassis to Floor) 4,8 mm
 Droop On 10mm Block ☐ Axle Height ☐ mm
 Anti-roll Bar No ☐ 1.20 ☐ 1.40 ☒ 1.60 ☐
 Castor 0° ☐ 2° ☐ 4° ☒ 6° ☐
 Camber Positive ☐ Negative ☒ 1,25 Deg
 Link Washers Under Ball ☐ Under Bracket ☒ 1,5mm
 Inboard Pin Kick-up ☐ Anti-dive ☐ Horizontal ☐
 Pivot Block Spacers Front mm Rear mm



Wishbone Flex CF ☒ M ☐



Centre Track Rod

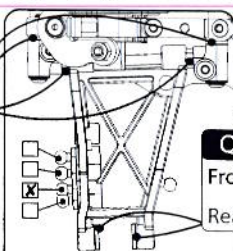
Washers mm

Link Mount

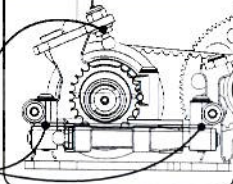
1 Groove - 45mm ☐
 2 Groove - 42mm ☐
 3 Groove - 39mm ☐
 4 Groove - 37mm ☒

REAR SETTINGS

Diff Ball ☐ Gear ☒ Oil M2 "C" Height High ☐ Low ☒
 Pivot Blocks Moulded (std) ☒ Alloy ☐
 Screw Block Spacers Front 1mm Rear 1mm
 Wishbone Quik-Klips Front 2mm Rear 2mm
 Toe In In-board ☒ 3° Out-board ☐ °
 Ride Height (Chassis to Floor) 5 mm
 Droop On 10mm Block ☒ Axle Height ☐ mm
 Anti-roll Bar No ☐ 1.20 ☒ 1.40 ☐ 1.60 ☐
 Camber Positive ☐ Negative ☒ 1,25 Deg
 Link Washers Under Ball ☐ Under Bracket ☒ 0,5mm
 Inboard Pin Pro-Squat ☐ Anti-Squat ☐ Horizontal ☐
 Pivot Block Spacers Front mm Rear 0mm



Wishbone Flex CF ☒ M ☐

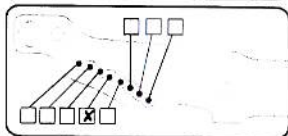


Link Mount

1 Groove - 45mm ☐
 2 Groove - 42mm ☐
 3 Groove - 39mm ☐
 4 Groove - 37mm ☒

Qwik Clips

Front 0,5 mm
 Rear 0,5 mm



Rear Shocks

Oil 35 WT
 Springs tam yellow
 Piston Holes 2 ☐ 3 ☒
 length Ø1,1
 Rebound 5 %